



Environmental  
Sciences

Acoustic Zooplankton  
Fish Profiler

Ice

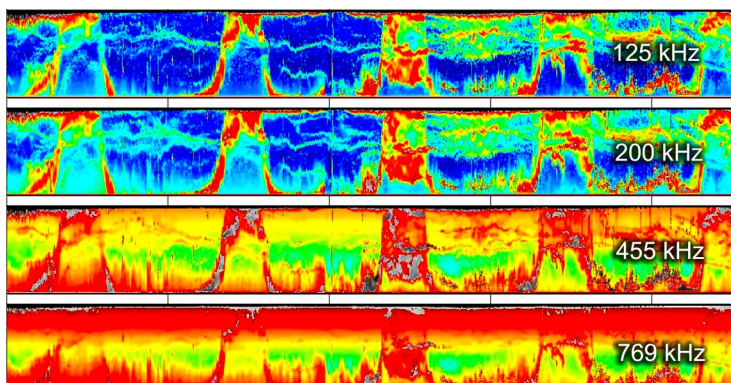


## Applications

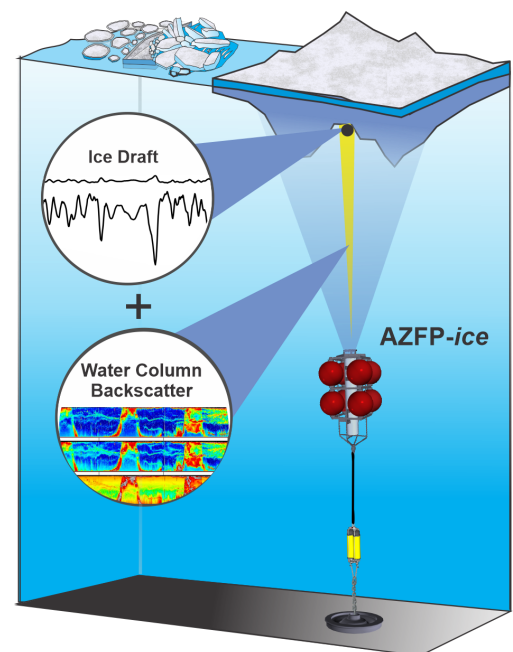
The Acoustic Zooplankton Fish Profiler-ice (AZFP-ice) combines the [AZFP's](#) abilities to monitor the presence and abundance of zooplankton, fish, suspended sediments and bubbles within the water column as well as the [Ice Profiling Sonar's](#) (IPS) abilities to measure ice draft. A powerful calibrated tool for scientific research and environmental monitoring in oceans, lakes and rivers.

## Features

- Can collect data continuously for periods of up to one year at high temporal and spatial resolution
- The AZFP component is available with up to four frequencies
- Can be deployed in bottom-mounted frame, or taut-line mooring.



Unmatched combination of multiple frequency operation with low power and long endurance that fits your budget.



Schematic of taut-line mooring configuration



Environmental  
Sciences

ASL Environmental Sciences  
#1-6703 Rajpur Place  
Saanichton, BC  
V8M1Z5 Canada

Phone: +1 250 656-0177

Email: [asl@aslenv.com](mailto:asl@aslenv.com)

Website: [aslenv.com](http://aslenv.com)

