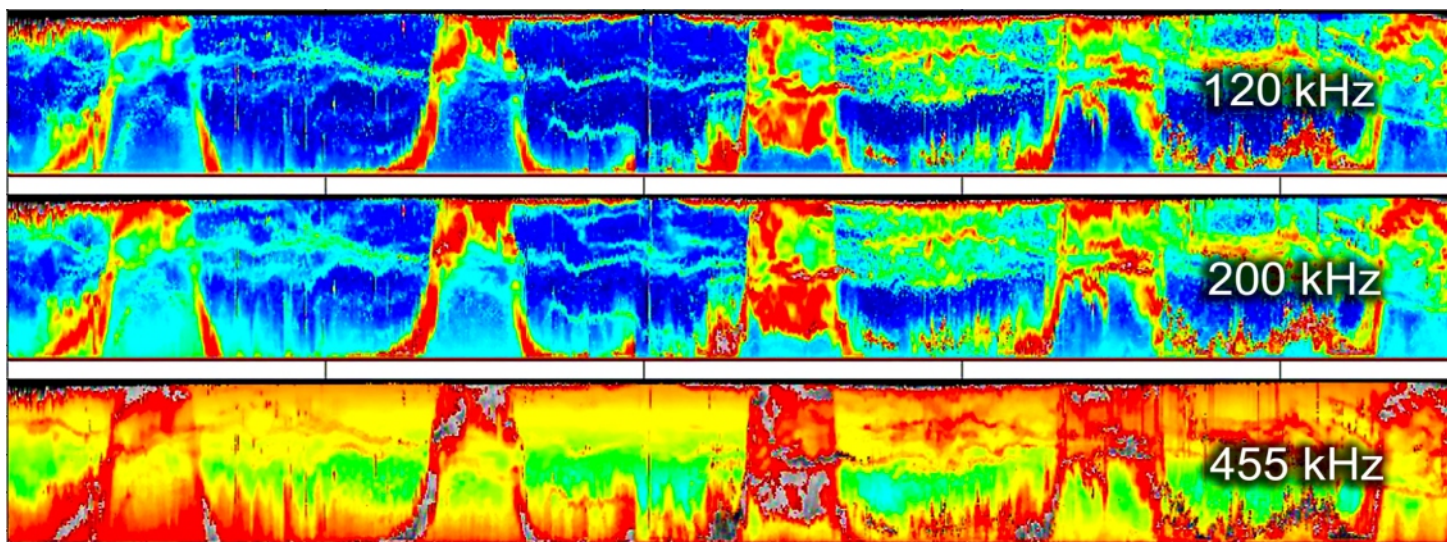




Environmental
Sciences

Turnkey solutions to **Hydroacoustics**



Overview

ASL Environmental Sciences Inc. supports a wide range of users with complete turnkey solutions for aquatic studies using bioacoustics. ASL offers advanced data processing of bioacoustic datasets including noise removal, boundary identification, echometric and time-series analysis, distinguishing taxa using multifrequency and broadband approaches, and estimating biomass. We also offer technical writing and data visualization, and are active in academic collaborations.

Develop Sensor Package

ASL has developed a family of advanced acoustic instruments and products for aquatic environments. We provide either [lease](#) or purchase options to suit your research goals. We offer [custom mooring designs](#) whether it be a single or complex suite of instruments configured as bottom frames or taut-line moorings. ASL has Canada's largest physical oceanographic equipment lease pool.

Data Collection

ASL designs and implements field data collection programs with client and site needs in mind and has extensive field deployment and recovery experience that draws upon 45+ years in aquatic settings all around the world.

Data Processing

ASL has experience with a range of computational tools including Echoview software and has developed custom-designed pipelines built in R, MATLAB and Python. We support the analyses of ASL's [AZFP](#) and [AZFP-ice](#) as well as the full range of Simrad's scientific echosounders.

Applications

Fisheries and Marine Resource Management | Aquaculture | Long-Term Ecological Research | Mobile and Stationary Surveys | Bubbles and Sediments | Ice Profiling & Under-Ice Monitoring



Environmental
Sciences

ASL Environmental Sciences
#1-6703 Rajpur Place
V8M 1Z5 Saanichton, BC
Canada

Phone: +1250-656-0177
Email: asl@aslenv.com
Website: aslenv.com

